



## 101 Hubert Road Birmingham, B29 6ET

\*\*\*AVAILABLE 1st SEPT\*\*\* \*\*AVAILABLE NOW FOR IMMEDIATE MOVE IN UNTIL 31.08.2023\*\* 11 ROOMS AVAILABLE INDIVIDUALS OR A GROUP

Fully inclusive package of £138pppw including ALL BILLS (Fair usage clause to be added).  
Excellent recently refurbished 12 double bedrooms with en-suites including a flat screen television in every room. Fully fitted modern kitchen with open plan living area including flat screen TV.  
Additional guest WC. Great location for students.

Available to individual students, small groups or a large group.  
Council Tax Band - B  
Term - 12 months  
Deposit - £650 per person

**£1,620 Per Week**

# 101 Hubert Road

Birmingham, B29 6ET



\*\*\*AVAILABLE 1st SEPT\*\*\*

groups or a large group.

\*\*AVAILABLE NOW FOR IMMEDIATE

Council Tax Band - B

MOVE IN UNTIL 31.08.2023\*\*

Term - 12 months

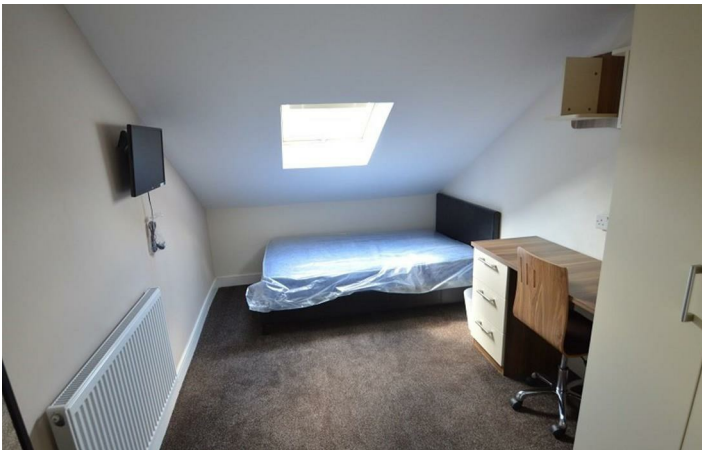
Deposit - £650 per person

Fully inclusive package of £135pppw including ALL BILLS (Fair usage clause to be added).

Excellent recently refurbished 12 double bedrooms with en-suites including a flat screen television in every room. Fully fitted modern kitchen with open plan living area including flat screen TV. Additional guest WC. Great location for students.

Available to individual students, small

[Directions](#)



# Floor Plan

These particulars, whilst believed to be accurate are set out as a general outline only for guidance and do not constitute any part of an offer or contract. Intending purchasers should not rely on them as statements of representation of fact, but must satisfy themselves by inspection or otherwise as to their accuracy. No person in this firm's employment has the authority to make or give any representation or warranty in respect of the property.



543 Bristol Road, Selly Oak, Birmingham B29 6AU. T: 0121 472 3331 Website: [www.direct-housing.co.uk](http://www.direct-housing.co.uk)  
E-mail: [sellyoak@direct-housing.co.uk](mailto:sellyoak@direct-housing.co.uk) [lettings@direct-housing.co.uk](mailto:lettings@direct-housing.co.uk) [accounts@direct-housing.co.uk](mailto:accounts@direct-housing.co.uk)

